

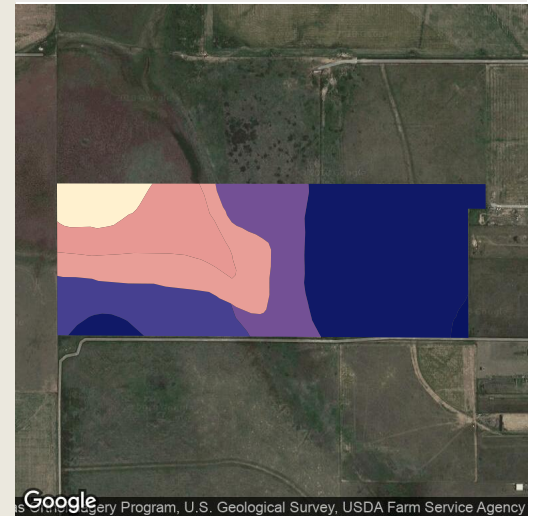
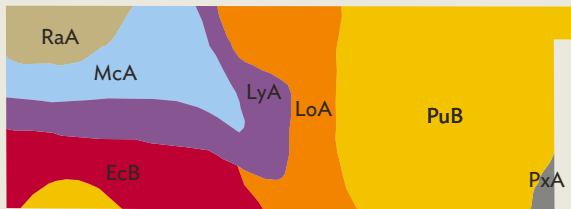
1 field, 134 acres in Randall County, TX

AVG NCCPI

38.1

COUNTY AVG

41.3



QUALITY 30 45

Google

Map data ©2018 Google

Source: NRCS Soil Survey

## All fields

134 ac

SOIL CODE	SOIL DESCRIPTION	ACRES	PERCENTAGE OF FIELD	SOIL CLASS	NCCPI	
■ PuB	Pullman clay loam, 1 to 3 percent slopes	53.92	40.3%	3	44.0	
■ LyA	Lockney clay, 0 to 1 percent slopes, rarely ponded	18.66	13.9%	3	32.9	
■ LoA	Lofton clay loam, 0 to 1 percent slopes, rarely ponded	18.62	13.9%	3	39.4	
■ McA	McLean clay, 0 to 1 percent slopes, occasionally ponded	17.90	13.4%	4	33.1	
■ EcB	Estacado clay loam, 1 to 3 percent slopes	16.28	12.2%	3	40.9	
■ RaA	Randall clay, 0 to 1 percent slopes, frequently ponded	7.73	5.8%	6	11.4	
■ PxA	Pantex silty clay loam, 0 to 1 percent slopes	0.69	0.5%	3	44.4	
					<b>133.80</b>	<b>38.1</b>